

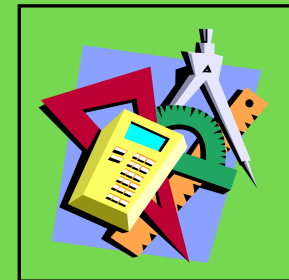
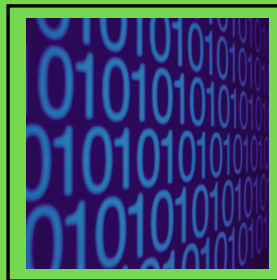
SEA

<http://steam-magnet.rdale.org>

School of Engineering and Arts

Parent Handbook and Calendar

2013-2014



Science, Technology, Engineering, Arts and Mathematics Program

School of Engineering and Arts

A K-5 Science, Technology, Engineering, Arts and Math (STEAM) School

1751 Kelly Drive

Golden Valley, MN 55427

Telephone: 763.504.7200

Fax: 763.504.7209

Office Hours: 8:00 a.m. – 4:30 p.m.

Web page: <http://sea.rdale.org>

Dear Families,

We welcome all of our families to SEA! It is our second year and we are excited to make this year even more special than the last one. We will continue to focus on the concept of “How are we different?” Thinking outside of the box and continually creating new ideas is what makes SEA special. We operate with the following thoughts:

- We are creating global citizens who will make a positive impact on society.
- Our school will focus on “ways to think” not on “how to think”.
- Every child’s voice will be heard. Every child’s voice will matter.
- Our environment will be rich in its diversity of people, thoughts and inventions.
- There will be no limitations in ideas and processes for our students.
- Imagination, innovation and inquiry will drive our practice.
- Science, technology engineering, arts and math will be integrated through all subjects.

Community, collaboration and continually raising the bar are part of our school’s culture. We pride ourselves on creating an environment of independent, creative thinkers who will make a difference in the world.

This publication is being offered to you in calendar form to help you stay abreast of events, as well as provide important information you will need during the school year. Come along with us and discover the SEA of possibilities that await you and your child.

Sincerely,

Kim Hiel
Principal

Quick Number Guide

Office Phone Number	763-504-7200
Principal's Office	763-504-7201
Assistant Administrator's Office... .	763-504-7202
Fax Number	763-504-7209
Absence Line	763-504-7210
Health Office	763-504-7205
Kitchen	763-504-7207

Grade Levels – Kindergarten through Grade 5
School Colors –Black, Purple and Green
Number of Students – 445

School Hours:

Full day Kindergarten and Grades 1-5: 9:15 a.m. –3:35 p.m.

Half Day Kindergarten:

Morning Kindergarten: 9:15 a.m. – 11:50 a.m.

Afternoon Kindergarten: 1:00 p.m. – 3:35 p.m.

9:00 a.m. – Walkers/Bussers may enter the school

2013-2014 School of Engineering and Arts Staff

Principal

Kim Hiel

kim_hiel@rdale.org

Assistant Principal

Kelley Delacruz

kelley_delacruz@rdale.org

Program Coordinator

Cara Rieckenberg

cara_rieckenberg@rdale.org

Secretary

Lori Opitz

lori_opitz@rdale.org

Curriculum/Office EA

Laurie Hanson

laurie_hanson@rdale.org

Art Specialist

Rachel Konair

rachel_konair@rdale.org

ELL

Kristine Quiring

kristine_quiring@rdale.org

Kathleen Nelson

kathleen_nelson@rdale.org

Gifted Education

Jennifer Weinand

jennifer_weinand@rdale.org

Music Specialist

Melissa Spreeman

melissa_spreeman@rdale.org

Band

Tammy Riste-Wahlen

tammy_riste_whalen@rdale.org

Orchestra

Kathleen Murphy

kathleen_murphy@rdale.org

Media Specialist

Carol Tracy

carol_tracy@rdale.org

Nurse

Colleen Werdien

colleen_werdien@rdale.org

Psychologist

Keri Hoffman

keri_hoffman@rdale.org

Social Worker

Julie Dahl

julie_dahl@rdale.org

Physical Education

Tom Luu

tom_luu@rdale.org

Speech

Linda Zuelow

linda_zuelow@rdale.org

Food Service

Patricia Opheim

patricia_opheim@rdale.org

Adventure Club

Melissa Hanson

melissa_hanson@rdale.org

2013-2014 Staff Continued

First Grade

Carol Callen
Carrie Casey
Tobi Kreifels

carol_callen@rdale.org
carrie_casey@rdale.org
tobi_kreifels@rdale.org

Second Grade

Zach Johnson
Tonya Larsen
Michele McDonald

zach_johnson@rdale.org
tonya_larsen@rdale.org
michele_mcdonald@rdale.org

Third Grade

Ann Wulff
Anne Norsted
Jessica Schultz

ann_wulff@rdale.org
anne_norsted@rdale.org
jessica_schults@rdale.org

Fourth Grade

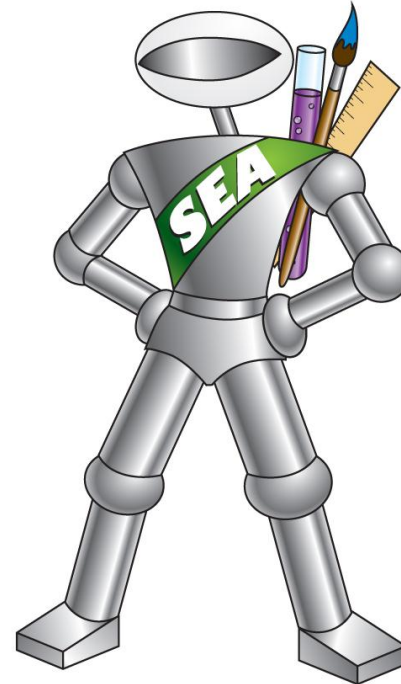
Erika Gentry
Elizabeth Kinville
Eric Wulff

erika_gentry@rdale.org
elizabeth_kinville@rdale.org
eric_wulff@rdale.org

Fifth Grade

Carrie Ehn
Chad Belling
Jody Durand

carrie_ehn@rdale.org
chad_belling@rdale.org
jody_durand@rdale.org



Nitro!

nitro_sea@rdale.org

Adventure Club

Adventure Club is a before and after school child care program for elementary students. It is offered at all Robbinsdale Area Elementary Schools. A site supervisor at each location directs age appropriate activities. Adventure Club hours are Monday – Friday from 6:30 a.m. – 6 p.m. It is open during school vacations, conferences and in-service days. For fee and enrollment information call 763-504-5320 or 763-504-7215.

Attendance

It is important for students to attend school on a regular basis. Please let the school know if your child will be absent or tardy. The absence for a student must be reported to the school between 6 a.m. and 9:30 a.m. by calling the **Absence Line 763-504-7210**.

Please give the following information when calling in your child.

- Name of student
- Grade/Name of teacher or room number
- Length of and reason for absence.

If we have not received a call from home by 10:15 a.m. you will be called to verify your child's absence. This will help ensure the safety of your child. If your child comes to school after 9:15 a.m., he/she must report to the nurse's office and obtain a pass to be admitted to class.

In Minnesota it is the parents' legal responsibility that all elementary children attend school. The only excused absences from school are for:

- Illness, religious holiday or death of a family member

Elementary students who miss more than a combined total of seven unexcused days of school, according to the Minnesota Statutes, are considered at risk for educational neglect and their parents are in violation of the state law on compulsory education.

Behavior

The School of Engineering and Arts is an environment where students are seen as individuals and a positive learning environment is maintained. Students are responsible for displaying behavior that is respectful to all members of our SEA family.

A booklet entitled “**Students Rights, Opportunities and Responsibilities Discipline Policy Handbook for Parents and Students in District 281**” will be given to each family in their open house packet or at the time of enrollment. Please take time to review the behavior expectations for all students who attend District 281 schools.

Please sign the card enclosed in the Discipline Policies booklet and return it to your child's classroom teacher.

Birthdays

Robbinsdale Area Schools is committed to the health and wellness of its students. Birthday celebrations at school can provide a unique way to shift focus from unhealthy foods (cakes, candy, etc.) to celebrating the child. Therefore, Robbinsdale Area Schools discourages edible birthday treats.

Students will not be allowed to bring treats from home to share with others due to an increase in food allergies and the negative effect of sugar on learning. Thanks for your support on this policy change regarding birthday treats at SEA for the 2013-14 school year. We also ask to please not send birthday party invitations to be distributed at school.

Buddy Classrooms

SEA teachers are encouraged to pair their classrooms together in order to provide cross-age activities in which children can experience positive social and academic relationships. Through buddy classroom interactions, the concept of community is experienced and reinforced when students are given opportunities to develop caring, trusting friendships across grade levels by engaging in shared learning experiences.

Bus Service

For a safe and enjoyable ride to and from school, children should be reminded frequently about the rules for good behavior on the bus:

- Remain seated until the bus stops.
- Use quiet voices.
- Enter and leave the bus in an orderly manner.
- Follow the directions of the bus driver.
- Keep hands and feet to yourself.
- No live animals or glass containers are allowed on the bus. Parents must send a note to the teacher or call the school office to indicate a change in bus plans. Riding the bus is a privilege. Bus safety rules are enforced for the safety of all passengers.

If you have any questions about bus transportation, please call the Transportation Office at 763-504-8107.

Cell Phones and Electronic Devices

Use of personal cell phones and personal electronic devices are not allowed during school hours. Bringing any of these devices to school is at the student's risk. The school personnel will not be responsible for investigating lost or stolen items. Misuse of any District electronic device may result in disciplinary action.

Change of Address/Phone Number

The parent/guardian should notify the school office as soon as possible concerning changes in home/work/cell phone numbers and/or address/emergency numbers.

Communication

Open communication between home and school is critical to your child's success. Conferences, open houses, report cards, school bulletins and newsletters are some of the formal ways we will use to keep you informed about your child's school experiences.

Thursday Folders: Every Thursday your child will bring home their Thursday folder. This folder will contain important information for you to read. **Please have your child return the folder to their teacher on the next school day.**

The monthly *School of Engineering and Arts Newsletter* will keep you informed of activities and events. Other home/school communications will be sent home by classroom teachers on a timely basis. Please check your child's backpack or book bag regularly for notes. Communication will be sent home via emails and school-wide phone messages as well.

We encourage you to call or contact us when you have concerns or need questions answered. Please talk with your child's teacher via email or phone call first. If the problem is not resolved or you need further information, please call:

- Principal – Kim Hiel, 763-504-7201
- Assistant Administrator – Kelley DeLaCruz, 763-504-7202
- Program Coordinator- Cara Rieckenberg, 763-504-7204 (in regard to curriculum and volunteering matters)

How can you help?

Please keep us informed. **A dated, signed note sent to your child's teacher is required in the following circumstances:**

- *Your child is going to someone else's home after school.
- *Your child will leave school early or leave and return during the day.
- *Your child will be picked up by someone other than you.

Conferences and Report Cards

Parent-student-teacher conferences are scheduled in the fall and spring. The purpose of fall conferences is to provide an opportunity for the parent/guardian and teacher to share information about the child.

During the spring conference, the teacher informs parents about their child's success in school. In addition, parents or teachers may request special conferences at any time during the school year. Following are the dates for the fall and spring conferences.

- Fall Conferences – October 8, 10, and 14, 2013
- Spring Conferences – March 11, 13, and 17, 2014
- Half Day kindergarten will also have conferences on
 - October 4 and 11, 2013
 - March 6 and 7, 2014

Report cards are issued at the end of 2nd, 3rd and 4th quarters. This report reflects the student's performance. Students are graded in subject areas as well as study habits and social growth.

Cycle Days

Rotating physical education and music on a 10-day schedule means that no child misses these special activities because of holidays or school closings. You will find the 10-day cycle days marked in the lower portion of each day on the school calendar. The first number denotes week 1 or 2. The second number indicates the day of the cycle.

Custody

In cases where parents are separated or divorced and one parent has legal custody of a child, **the school must have a copy of the court order that determines custody and visitation rights.** The school must have legal documentation in order to comply with any limiting court order. State and federal data privacy laws recognize the right of a natural parent, regardless of child custody, to have access to the school records of their child. A non-custodial, natural parent may arrange to review the school record of their child. Please be prepared to show ID if requested by the office staff.

Dress

In general, students should wear clothing that is comfortable, in good taste and appropriate for the weather. Students are expected to go outside each day unless we have inclement weather. During the winter months, students should be dressed appropriately and boots are needed when there is snow on the ground. The wind chill factor and temperature are checked before students go outside for recess. **Students are expected to go outside unless the temperature or wind chill is less than 10 degrees below zero.**

Engineering Exploration (E2) Lab

SEA's E2 Lab is a specially designed space for student discovery and hands-on engagement of different engineering types including, but not limited to: Chemical, Civil, Electrical, Environmental, Manufacturing, and Mechanical. The E2 Lab will house exploratory kits as well as tools and devices, such as sensors, probes, microscopes, etc. to enrich investigations.

Family Nights

The School of Engineering and Arts has scheduled family evenings to help highlight the concepts students are learning about at school. These evenings are a great opportunity for families to do fun hands-on activities together, as well as meet other SEA families.

The 2013-14 nights are:

- | | | |
|---------------------|----------------------|----------------|
| • November 14, 2013 | Family STEAM Night | 5:30-7:30 p.m. |
| • February 20, 2014 | Family Reading Night | 5:30-7:30 p.m. |
| • April 24, 2013 | Night of the Arts | 5:30-7:30 p.m. |

Field Experiences

All SEA students will participate in multiple field experiences each school year. Field experiences provide students with authentic learning to increase first-hand knowledge and evaluation of our world. A field experience includes any learning that occurs outside of the four walls of the classroom.

At times, parents might be asked to help with supervision of field experiences. At the beginning of the year, parents will be asked to sign a general permission slip that will be effective for the entire year. An informational letter will be sent home for parents prior to any trip outside the Robbinsdale Area School District.

Regardless of the location, when students participate in a field experience, they are expected to follow SEA expectations of behavior, stay close to their group, respond to all chaperones, act respectfully with an appropriate voice level appropriate for the field experience, raise their hand and wait to be called upon by speakers and show appreciation by clapping.

Fines (Textbooks Lost or Destroyed)

The school will charge an appropriate replacement fee for textbooks, workbooks or library books lost or destroyed by students.

Fire Drills/Lockdowns/Tornado Drill

State law requires schools to have five fire drills, five lockdown drills and one tornado drill each year. All drills are important for your child's safety.

Food Services: Lunch and Breakfast

Breakfast and lunch are available for all children in our school. Breakfast is served daily until 9:15 a.m., and is optional. Lunch may be purchased from the school or brought in from home. Students may purchase lunch credits on a daily or weekly basis. Applications for free and reduced-price meals are available in the school office. Menus are distributed to students each month by means of the SEA monthly newsletter. They can also be found online under Child Nutrition and are also published in the *Sun Post* newspaper and on the district's cable channel 39.

2013-14 Elementary Meal Prices

Breakfast	\$1.30
Reduced – price breakfast	Free
Lunch	\$2.30
Reduced – price lunch	\$.40
Milk	\$.50
Juice	\$.50
Adult Breakfast	\$1.80
Adult Lunch	\$3.60

Pop/Carbonated drinks are not allowed at lunch. To help maintain a healthy diet, we also suggest students not to bring junk food with their lunch.

Health Services

A registered nurse and/or health education assistant are on duty daily at School of Engineering and Arts. Please alert the school nurse or teacher if your child has a particular health problem that may affect the child's learning or functioning at school. When a child develops a fever or other symptoms of illness or receives a significant injury, the parent or other person listed as the emergency contact will be notified. It is the parent's responsibility to provide transportation home for the child. **The child should be picked up as soon as possible.**

Kinesiology Lab

It is *district policy* that children should have tennis shoes for physical education. Slip-on shoes are not acceptable. Shoes should be clean and should not have black soles that mark the floor. If a child is not going to participate in physical education classes, he/she must bring a note from home and/or your doctor.

Robbinsdale Area Schools Health Services Tennessean Warning

Personal health information including, but not limited to, immunizations records, physician orders, medication documentation, emergency care plans, individual health plan, medical reports, nursing assessments, health office visits and screening results may be contained in the child's health record. This information is requested and collected to facilitate the provision of appropriate health and educational services for your child during the school day. Parents are legally required to provide proof of compliance with state immunization laws by providing either dates of required immunizations or notarized conscientious objection pursuant to Minnesota Statue 121A.15. Failure to provide proof of compliance with state immunization laws will result in your child being unable to attend school. You are not legally obligated to provide information regarding your child's health, although failure to do so could result in serious health consequences at school.

The information in the child's health record is private and, with limited exception, cannot be disclosed without the parents' consent. One exception allows the child's health information to be shared with staff at the school that needs to know the information to help ensure the safety of your child or others. The information may also be shared with staff accompanying your child out of district on field trips and overnight trips who need to know the information to help ensure the safety of your child or others. Another exception allows the Minnesota Department of Health and local Board of Health to have access to your child's immunization files pursuant to state law. District 281 shares and receives immunization information as part of the Hennepin County *Immulin* system. Another exception requires the school district to forward a copy of your child's health record to the proper department of any state to which your child resides.

If your child transfers to another school, school staff will assist you in transferring your child's health information file to the new school. Another exception allows release of your child's health information in health and safety emergencies pursuant to federal and state law. Your child's health information may also be released without your consent pursuant to a validly issued court order or subpoena, and other specific exceptions listed in 34 CFR § 99.31 and/or Minnesota Statue, Chapter 13. You may contact the school principal or school nurse at your child's school if you have questions or concerns regarding this notice.

Inquiry Based Instruction

Instruction at SEA will be along the inquiry continuum. This continuum includes the traditional direct instruction on one end to open inquiry investigations with the student determining the question, the investigation and the answer on the other end. All levels of inquiry based instruction involve students in a form of active learning emphasizing observations, questioning, data collection, analysis and evaluation, and communicating explanations based on evidence.

Lost and Found

A lost and found cart is located on the first floor and second floor on the north side of the building. Please check the lost and found periodically for misplaced articles of clothing or school supplies. **All items in the “Lost and Found” are removed and disposed of at the end of each month. Storage space for these items is limited. We urge you to mark ALL clothing/shoes items with your child’s name in permanent ink.**

Medications

Medication will be given only with written authorization from the child’s physician and written permission from the parents. Forms are available in the health office for this purpose. All medications including cough drops must be kept in the health office. Medications must come in labeled pharmacy bottles. If you know your child will need to take medication at school, ask your pharmacist for a duplicate bottle. **Over-the-counter medications will not be administered without written authorization from the child’s physician.** All medication brought to school by students must be kept in the health office, including inhalers.

Outdoor Learning

The SEA site and surrounding area provides many opportunities for students to interact with nature and engage in authentic learning experiences. SEA teachers will frequently be taking students outdoors for learning opportunities. Please make sure your child dresses appropriately for the weather each day. When this occurs, staff will take a radio or cell phone along in order to remain in contact with the office.

As within our built school, our outdoor classrooms also have guidelines. Through discussion and guided discovery, students will be taught that when outdoors for learning, they need to:

- Use quiet voices and feet;
- Stay on the trails or where a teacher has indicated as safe and appropriate;
- Selectively choose samples;
- Return samples to where they were taken;
- Unless directed, leave nature where it is (grass on the ground, twigs on the tree, etc.);
- Always be in a spot where the teacher can be seen and the teacher can see them;
- Keep up with the teacher so they don’t miss anything;
- If they see litter, pick it up or tell the teacher.

Outside Recess (District Policy)

- ◆ Warmer than -10 degrees (wind chill or actual temperature) Outside recess for all students
- ◆ Colder than -10 degrees (wind chill or actual temperature) Indoor recess for all students

Patrols

Our student safety patrol will be on duty from 8:50 – 9:10 a.m. at Olympia/Kelly, and school driveway on Kelly Drive. Afternoon patrols will be on duty from 3:25 – 3:45 p.m. Please be sure that students arrive on time. All students are to cooperate and follow directions given by our safety patrols. The patrols have a significant responsibility for students' safety and should be treated respectfully. Students will not patrol during unsafe cold weather conditions.

Parking

Please use the south side lot. Drop off your student at the curb with the sign that states “drop off area” on the side of the building (by south lot). **For safety reasons, all students should exit the car on the passenger side.** Please DO NOT park in the lot by the fields during arrival and dismissal times – our buses park in this area. Safety is of utmost importance, **so please use the designated crosswalks.**

Pets in the Classroom

School district policy states that NO animals and/or pets are permitted in classrooms for any length of time.

Recycling and Waste Reduction

At SEA, we recycle paper, cardboard, plastics, glass and aluminum as produced within our school. We will also eventually be composting appropriate food and material waste. We encourage students and staff when bringing snacks or lunches from home, to do so in reusable containers. Through these actions, we model to our students that they do have an impact on both our human and natural world.

Science, Technology, Engineering, Arts and Math (STEAM) Focus

How will we be addressing STEAM at SEA?

Science will be addressed on a spectrum of direct instruction, helping to build foundational knowledge, to open inquiry, promoting our students' natural sense of wonder. Science will be a part of everyday learning occurring both in and outside the classroom.

Technology will be used as a tool and medium in which to consume and produce information. Multiple forms including hardware (computers, laptops, iPads, cameras, etc.), software (web-based programs, apps, etc.) and programming (Legos, Scratch, etc.) will be used as often as possible in as many ways as possible throughout the students' day.

Engineering will be promoted as both design and invention. The Engineering Design Model will be utilized to engage students in cross-curricular investigations promoting creativity, thoughtful planning, critical conversations, mistakes, and 'almost final' products.

Arts will be embedded in many aspects of the students' day. Whether through the design process, observation, offering and receiving critiques, or just plain creating, our students' work will be reflective of multiple forms of art including digital media, drawing, architecture, sculpting, graphic design, and visual art.

Math, like science, will be delivered on a spectrum of direct instruction allowing for practical, authentic application of mathematical concepts. Students will come to realize that math is the language spoken when conducting science, technology, engineering or art investigations.

Release of a Student from School

For your child's protection, it is our policy not to release a student to anyone other than parents unless we have received a signed and dated note stating the name of the person who has permission to pick up your child. On occasion, you may have to take your child out of classes for a short period of time or before the end of the day. Please come to the office to sign them out and your child will be called to meet you in the office. **Be prepared to show ID if requested by the office staff.** No child will be allowed to leave the classroom until the teacher has been notified that he/she has been signed out in the office. **Please do not go to your child's classroom to pick them up.** This creates an unnecessary interruption in instructional time for everyone in the room.

****Notification to a change of a child's end of day plan must be done no later than 2:45 p.m. on a given day.
After 2:45 p.m., all students will go home as usual.**

School Closing

When the weather or other circumstances make it necessary to close school or start late, the decision is usually made by 5:30 a.m. Cancellation, late start or early dismissals will be announced on the District's website at www.rdale.k12.mn.us, WCCO radio 830 AM, WCCO channel 4, KSTP channel 5, KMSP channel 9, KARE channel 11, and cable channel 12. The School of Engineering and Arts is included in the **Robbinsdale ISD 281** schools. To receive school closing announcements via email, sign up for the district's eNews service at www.rdale.k12.mn.us and click on the "subscribe to eNews" icon. **Please avoid calling the school during this extremely busy time.** **School Day**

School hours are 9:15 a.m. – 3:35 p.m.

Half Day Kindergarten: Morning: 9:15 a.m. – 11:50 a.m.

Afternoon: 1:00 p.m. – 3:35 p.m.

Students should not arrive at school before 9:05 a.m.

Parents/Guardians who are picking up their student/s after school will meet their child in the Media Center. You will be asked to present an ID until staff becomes familiar with the adult who will be picking up the student. This process is for your child's safety. Please enter through the doors located at the front of the building (by the office).

Students/Severe Weather

Students may be kept in school after regular dismissal time if severe weather poses a danger for them. It is important to make arrangements with friends, neighbors or relatives to care for your child in the event that school must be dismissed early. Make sure your child knows where to go if you are not home. **DO NOT CALL THE SCHOOL** unless it is an extreme emergency. Incoming calls tie up lines at a time when school personnel must use the phones to ensure the safety of all students.

Telephone Calls

Students will not be called out of the classroom to take a phone call except in an extreme emergency. Messages may be left for our students before noon to allow teachers the time to relay the message after lunch. After that time it is extremely difficult to relay messages to students. Classrooms will not be interrupted to give reminders to students about prearranged activities. We ask that you find other ways to help your child remember; for example, a note pinned to the child's backpack or school bag. Students will be allowed to use the phone only with an adult's permission. **After-school plans should be made prior to leaving home in the morning.**

Visiting School

Parents are always welcome at SEA. If you wish to visit a classroom, pre-arrangements should be made with the teacher or through the principal. **Please do not bring other children with you during these classroom visits.** Visiting by children from other schools is not permitted. Parents are invited to join their child for lunch anytime. No prior reservation is needed. When you arrive, please check in at the office and pick up a "visitors" badge. We require all visitors to check to ensure the safety of all children.

ROBBINSDALE AREA SCHOOLS – INDEPENDENT DISTRICT 281

POLICY FOR A TOBACCO-FREE ENVIRONMENT

I. PURPOSE

A. Robbinsdale Area Schools is committed to providing a safe and healthy learning and working environment for its students, staff and visitors. The district is acutely aware of the serious health risks associated with the use of tobacco products, both to users and non-users. The district recognizes that personnel and school visitors serve as role models to students and, therefore, adopts this Tobacco-Free Environment Policy to endorse the prevention of tobacco use and exposure.

B. The district has a responsibility to comply with the Minnesota Clean Indoor Air Act and Minnesota law governing the prohibition of tobacco products in public schools.

II. GENERAL STATEMENT OF POLICY

A. No person or student may smoke or use tobacco products at any time:

- a.** In any building or upon any grounds and parking lots which are owned (or leased) and occupied by the school district;
- b.** In any location or facility during any school or school district-sponsored educational program, activity or event regardless of the location of such activity or event;
- c.** In any vehicle owned (or leased) by the school district.

B. Additionally, no student is permitted to possess tobacco products on school property at any time.

C. Tobacco advertising is prohibited on school grounds, in all school-sponsored publications and at all school-sponsored events. Tobacco promotional items, including clothing, bags, lighters, and other personal articles, are not permitted on school grounds, in school vehicles, or at school-sponsored events. Tobacco industry advertising, including advertising of commercial films in which tobacco smoking is featured, is prohibited in schools, school-sponsored publications, and school-sponsored events.

III. TOBACCO AND TOBACCO RELATED DEVICES DEFINED

A. “Tobacco products” means any products containing, made, or derived from tobacco that is intended for human consumption, whether chewed, smoked, absorbed, dissolved, inhaled, snorted, sniffed, or ingested by any other means, or any component, part, or accessory of a tobacco product, including, but not limited to cigarettes; little cigars, cheroots, stogies, perique, granulated, plug cut,

crimp cut, ready rubbed, and other smoking tobacco; snuff; snuff flour; cavendish; plug and twist tobacco; fine cut and other chewing tobacco; shorts; refuse scraps, clippings, cuttings and sweepings of tobacco; other kinds and forms of tobacco. Tobacco products excludes any tobacco product that has been approved by the United States Food and Drug Administration for sale as a tobacco cessation product, as a tobacco dependence product, or for other medical purposes, and is being marketed and sold solely for such an approved purpose.

B. “Tobacco-related devices” means cigarette papers or pipes for smoking.

C. “Smoking” means inhaling or exhaling smoke from any lighted cigar, cigarette, pipe, or any other lighted tobacco or plant product. Smoking also includes carrying a lighted cigar, cigarette, pipe, or any other lighted tobacco or plant product intended for inhalation.

IV. EXCEPTION

It shall not be a violation of this policy for an adult to use tobacco on school district property as part of an approved Native American traditional spiritual or cultural ceremony.

V. ENFORCEMENT

A. All individuals on school premises shall adhere to this policy.

B. Students who violate this tobacco-free environment policy shall be subject to school discipline policy and procedures.

C. School personnel who violate this tobacco-free environment policy shall be subject to personnel discipline policy and procedures.

D. Any person who violates this tobacco-free environment policy may be referred to the administration or other school supervisory personnel responsible for the area or program at which the violation occurred.

E. School administrators may call the local law enforcement agency to assist with enforcement of this policy. Smoking or use of any tobacco product in a public school is a violation of the Minnesota Clean Indoor Air Act.

VI. DISSEMINATION OF POLICY

A. Appropriate signs will be posted throughout the district at entrances and other appropriate locations on all district buildings, administrative spaces, and athletic fields indicating that tobacco use is not permitted. Students and families will be provided notice of this policy through student handbooks and district personnel will be provided notice of this policy through personnel handbooks.

Legal References: Minnesota Clean Indoor Air Act

- MN Stat. 144.413 (Definitions)
- MN Stat. 144.4165 (Tobacco Products Prohibited in Public Schools)
- MN Stat. 144.417 (Commissioner of Health, Enforcement, Penalties)
- MN Stat. 260.755 (Definitions)

DISTRICT 281 NONDISCRIMINATION POLICY

District 281 does not discriminate on the basis of race, color, national origin, sex or handicap in admission, treatment or access to its programs and activities, or in employment in its programs and activities. The district has designated two individuals to coordinate efforts to comply with federal laws and regulations.

Marcellus Davis is designated under Title IX of the Educational Amendments of 1972 (non-discrimination on the basis of sex in educational programs and activities, including employment and admission). He is responsible for coordinating district efforts to comply with Title IX, including investigation of complaints alleging non-compliance or alleging any actions prohibited by Title IX.

Home School Liaisons & Bilingual Home School Liaisons

Betty Tapias-Heinrich	Spanish Bilingual Home School Liaison	763-504-7981
Valeri (Larry) Tchijik	Russian Bilingual Home School Liaison	763-504-7980
Mohammed Ahmed-Abass	Somalian Bilingual Home School Liaison	On Call

Inquiries concerning Title IX and Section 504 may be directed to Ellen Voit at Independent School District 281, 4148 Winnetka Ave N, New Hope, MN 55427, phone number 763-504-8000.



School Board Information

Aldo Sicoli

Superintendent

**aldo_sicoli@rdale.org
763-504-8011**

Helen Bassett

**helen_bassett@rdale.org
763-504-7997**

Mark Bomchill

**mark_bomchill@rdale.org
763-504-7993**

Patsy Green

**patsy_green@rdale.org
763-504-7992**

Linda Johnson

**linda_johnson@rdale.org
763-504-7994**

Sherry Tyrell

**sherry_tyrell@rdale.org
763-504-7992**

Tom Walsh


**tom_walsh@rdale.org
763-504-7996**

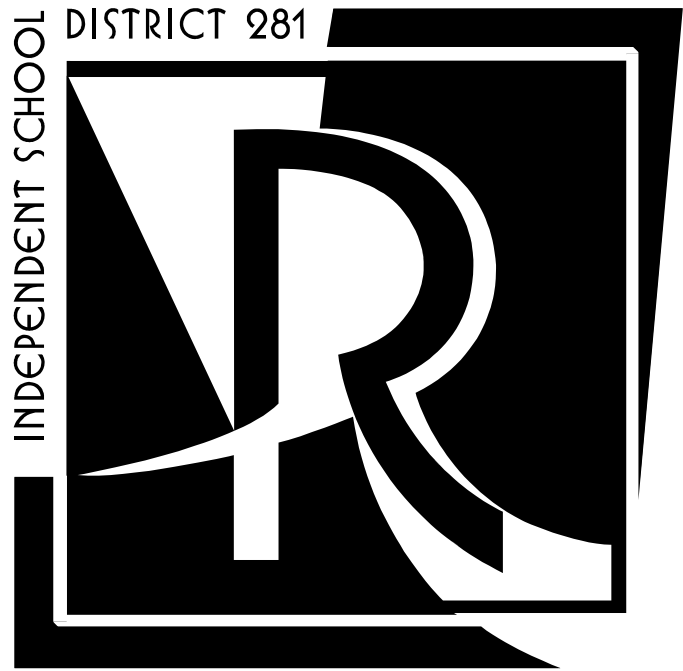
John Vento

**john_vento@rdale.org
634-504-7995**

School Board contact Information

**Group Voice Mail
763-504-7990
Group Email
school_board@rdale.org**





ROBBINSDALE

area schools